



VISION SOUTH BANK

# VISION SOUTH BANK PRIORITY PROJECTS



Business  
South Bank  
Well connected

Business South Bank



# CONTENTS

- 5 Introduction
- 6 Determining Priorities
- 8 Priority 1 Improving Connection
- 10 Key Connector Street Map
- 12 Key Connector Streets
- 14 Footpath and Bikeways
- 16 Public Amenities
- 18 Regeneration
- 20 Lighting
- 22 Priority 2 Space to Grow Map
- 24 Space of Grow
- 26 Opportunities
- 30 Engagement

*Photo Credits: Conrad Gargett, ARIA Property Group,  
West Village, Visit Brisbane, Eat South Bank & West End Magazine*



# INTRODUCTION

The Vision South Bank Priorities report is an addendum to the 2017 Vision South Bank Report and presents what is considered priorities for the precinct.

The original report was an initiative that promoted the shared vision of Business South Bank stakeholders with the purpose to progress opportunities for economic and cultural development and improve the urban environment.

The following four strategies were identified in the 2017 report:

## 1. GLOBAL DESTINATIONS

- Provides a long-term plan for expanding the precinct's offer of cultural destinations, education and events facilities and related business opportunities.

## 2. CONNECT TOGETHER

- Offers a blueprint for improving key connections within and beyond the precinct, including major gateways, streets, pathways and river links.

## 3. SPACE TO GROW

- This strategy identifies new public spaces to be provided in the future and highlights those spaces that will need further upgrading and investment.

## 4. COLLABORATE

- Presents a shared understanding of the need for precinct stakeholders to collaborate on marketing, events, information and planning.

# DETERMINING PRIORITIES



In determining the priorities, Business South Bank (BSB) considered the current and proposed advancements in the precinct including:

- New Performing Arts Venue
- Neville Bonner Bridge
- Riverside Open Space
- Brisbane Metro Project
- Cross River Rail
- South Bank Masterplan
- Proposed Green Bridges

Priorities need to, not only recognise these developments but also, supplement and complement them.

It was also determined that given the economic climate, it is important to present opportunities that were achievable.

The priorities and opportunities presented take into consideration three global trends:

1. Localism - people rediscovering and appreciating their neighbourhood
2. Sustainability and regeneration
3. Health, safety and wellness

It is BSB's aspiration that opportunities presented within this report are able to be implemented within a 1-3 year period.

Implementation and planning should be a collaborative effort between stakeholders that include Brisbane City Council, State Government, traditional and private landowners and the users of the precinct.

The first priorities that bring to life the 20-year shared vision of the precinct are:

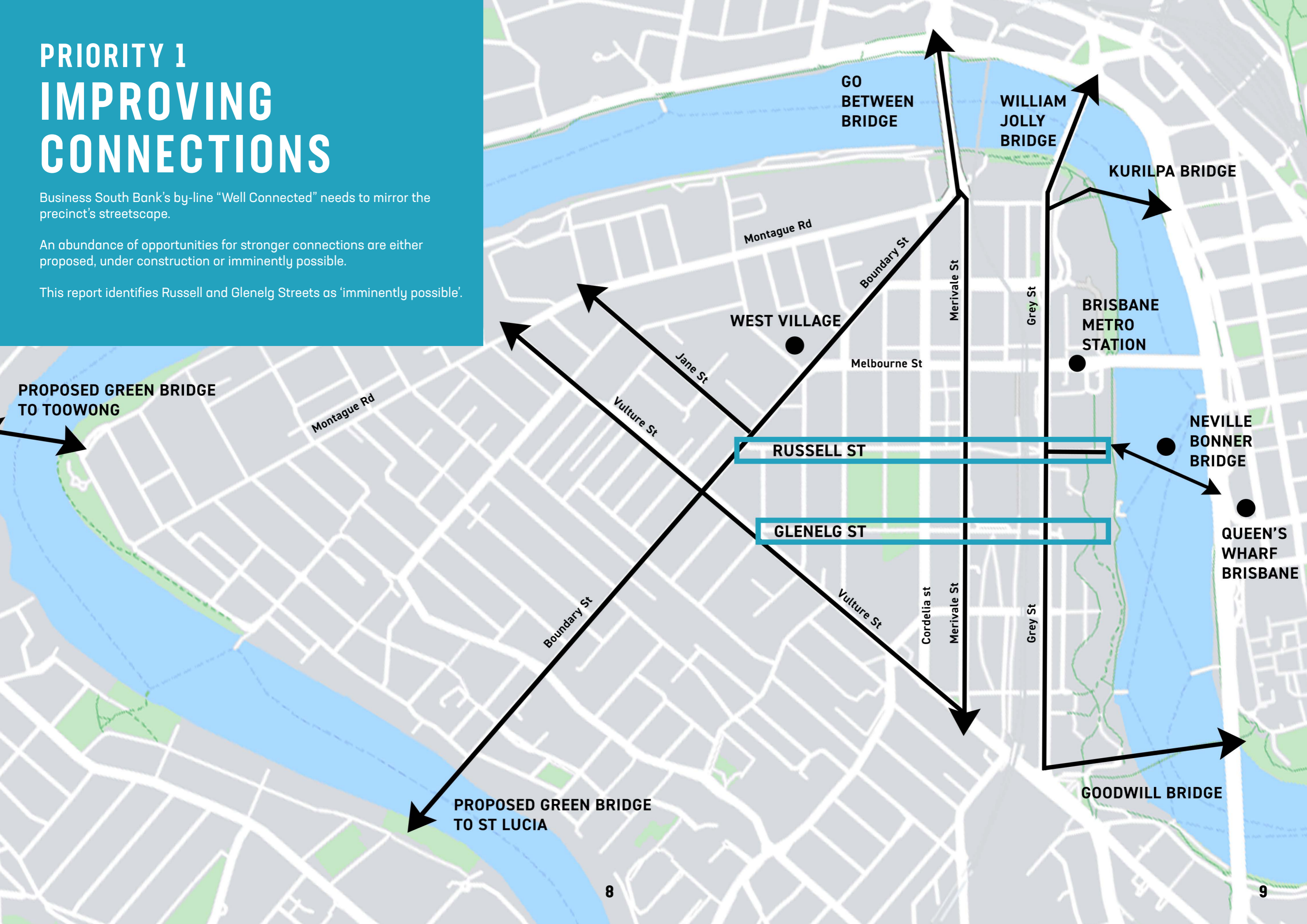
1. Key connector streets in the precinct
  - Russell Street - an urban pathway connecting the river and the city to Musgrave Park and West End
  - Glenelg Street - potential to be a 'green spine' linking the river and two iconic parks
2. Maximising open and green spaces & establishing micro-performance/art spaces to add to public amenity
  - Musgrave Park - a true community space for all
  - Creation of new public micro performances/art spaces
  - Opportunities to improve livability of the city
3. It is recognised that in order for connector streets and the maximisation of open and green spaces to be effective, the engagement of the community is required. BSB addresses this topic towards the end of the document.

# PRIORITY 1 IMPROVING CONNECTIONS

Business South Bank's by-line "Well Connected" needs to mirror the precinct's streetscape.

An abundance of opportunities for stronger connections are either proposed, under construction or imminently possible.

This report identifies Russell and Glenelg Streets as 'imminently possible'.



PROPOSED GREEN BRIDGE  
TO TOOWONG

GO  
BETWEEN  
BRIDGE

WILLIAM  
JOLLY  
BRIDGE

KURILPA BRIDGE

WEST VILLAGE

BRISBANE  
METRO  
STATION

NEVILLE  
BONNER  
BRIDGE

QUEEN'S  
WHARF  
BRISBANE

RUSSELL ST

GLENELG ST

GOODWILL BRIDGE

PROPOSED GREEN BRIDGE  
TO ST LUCIA

# KEY CONNECTOR STREETS GLENELG & RUSSELL STREET

SOUTH BANK  
PARKLANDS

RUSSELL ST

MUSGRAVE PARK

GLENELG ST

# KEY CONNECTOR STREETS

## Russell Street

Russell Street is an obvious connector.

The Neville Bonner Bridge leads directly into Russell Street providing a magnificent and obvious opportunity to create linkages from the CBD all the way through to West End, and eventually across to the Western Suburbs with the proposed Brisbane City Council pedestrian bridges.

Currently Russell Street is made up of disengaged city blocks. The pedestrian footpath surfaces are different for each block, the crossings are irregular and disorganised, there is limited shade and greenery. There is no clear indication that Musgrave Park or West End will be found along the journey. There is no connection of the Brisbane River to Musgrave Park.

Improvements can be achieved through:

- Accessibility considerations
- Improved wayfinding
- Dedicated bike path
- Clear pedestrian crossings (particularly at the corner of Russell and Merivale St)
- Landscaping and shade
- Street art and street furniture that brings the precinct together in a coherent theme
- Creative and improved lighting

## Glenelg Street

Equally, Glenelg Street as highlighted in the 2017 Report, could become a 'green spine' linking two significant inner-city parks and the river.

Interestingly, Glenelg Street originally had a meandering waterway running through it sourced from the Brisbane River. Providing links back to the River is important homage to the area, whilst also providing regeneration and sustainability qualities.

Glenelg Street's topography lends itself to river views and breezes from top of Cordelia Street with improvements to the sightlines.

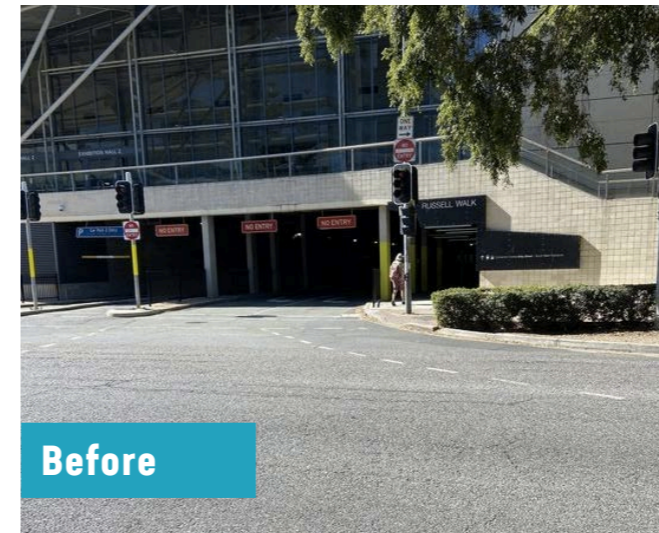
Glenelg Street is an important thoroughfare for patrons visiting Brisbane Convention and Exhibition Centre. Yet for a world-class venue its immediate streetscape is unpleasant with ambiguous connections to the two parks in its close proximity.

Improvements can be achieved through:

- Reimagining or removing the concrete piazza and the river to provide a visual cue and direction for pedestrian flow toward Musgrave Park
- Wider/accessible footpaths related to the topography of the street
- Dedicated bike path/link
- Landscaping and shade
- Road runoff flows into the nature strip acting as a source of irrigation
- Feature lighting and art space on the pedestrian tunnel link from Rydges to BCEC
- Create engaging sustainability features which allow visitors to be more aware of sustainability benefits

The following pages provide a visual journey of how two relatively neglected streets can be turned into important connectors and green spines.

# FOOTPATHS & BIKEWAYS



Confusing intersections - no clear crossing from Russell Walk.



Organised intersections with clearly marked pedestrian crossings, tactile paving and garden beds.



CityCycle and scooter stations with no designated bikeways.



Segregated bike lanes, shaded walkways and well thought out landscape encourages pedestrians to explore beyond South Bank parklands.



Rough and irregular surfaces. Dangerous for bikes, scooters and pedestrians.



Smooth, accesible surfaces providing clear visual connections.



Uneven and narrow walkways, with different footpath treatment in each section.



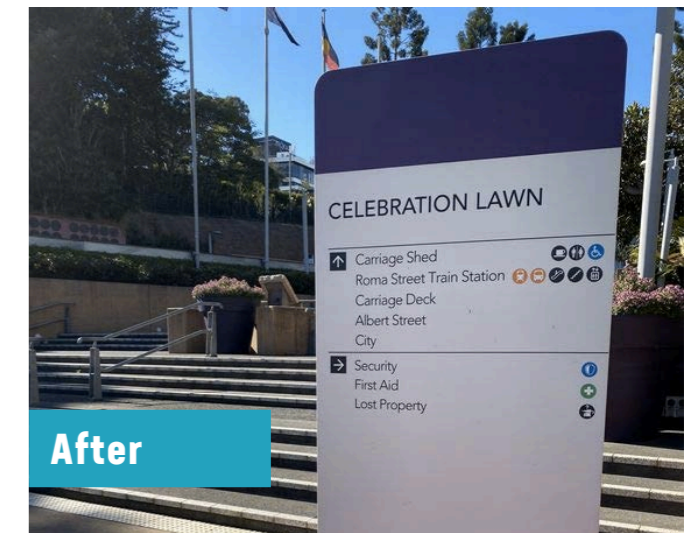
Accessible footpath, with added shade from greenery.



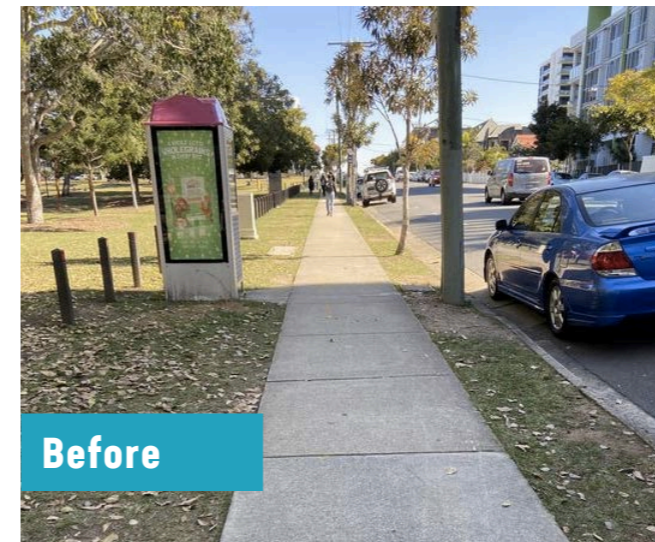
# PUBLIC AMENITIES



**Before**  
Old wayfinding signage, out-of-date and inconsistent information.



**After**  
Introduction of clean and clear wayfinding in keeping with whole of city approach.



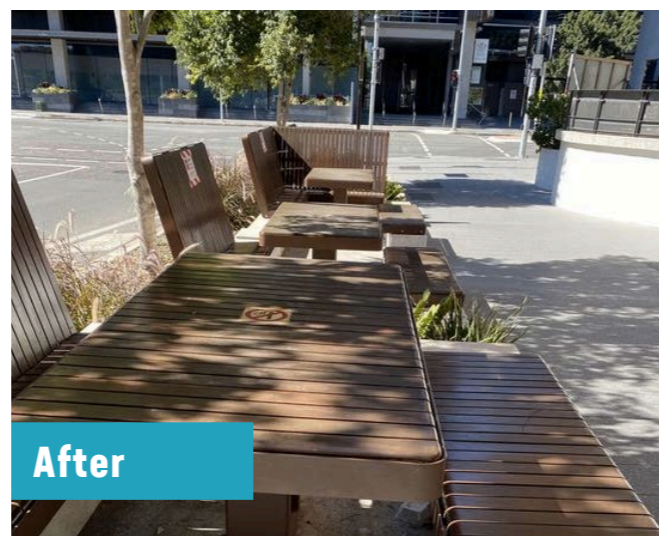
**Before**  
Path with no appeal adjacent to major inner-city park.



**After**  
Interesting bollards have dual purpose of street appeal and protection.



**Before**  
Barren streets with no amenities.



**After**  
Opportunity to introduce seating and comfort along pathways for improved amenity.



**Before**  
Dry, dirty beds with no street appeal and potential trip hazzards.



**After**  
Opportunities for story telling cleverly included in landscaping.

# REGENERATION



Before

Barren wall under railway bridge is noisy and unpleasant. This is a major thoroughfare for locals and visitors.



After

Green walls provide softness, noise absorption and promotes green spine theme between two parks.



Before

Non regenerative landscaping.



After

Clever self sustainable irrigation systems.



Before

Hot unpleasant footpath - not user friendly.



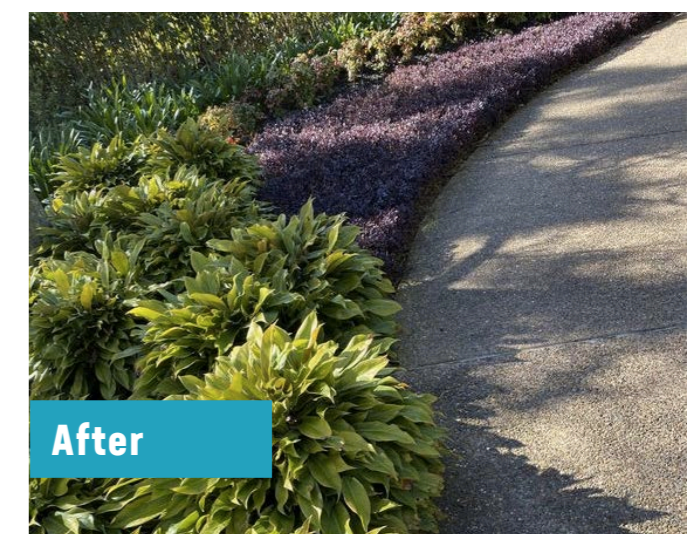
After

Garden beds, soft plantings and increased shade.



Before

Token planting provides neither aesthetic or function.



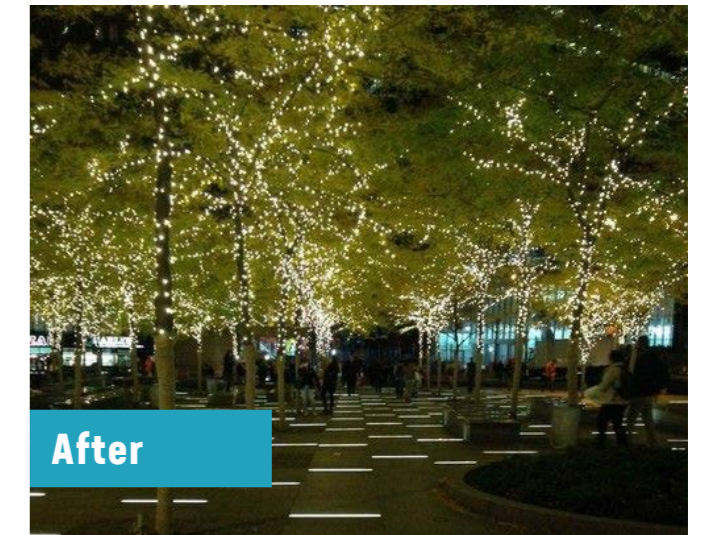
After

Pleasant and consistent planting provides softening and cooling impacts.

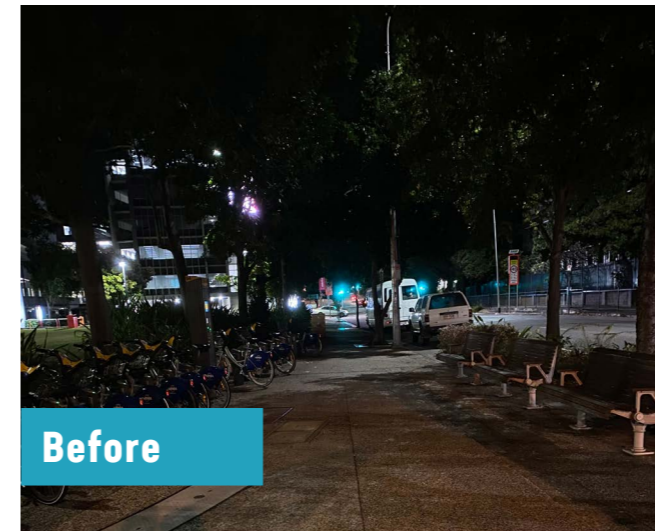
# LIGHTING



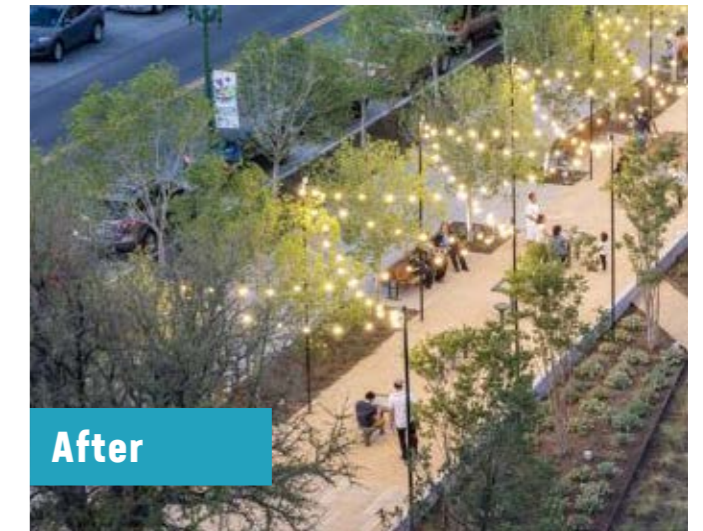
Tree lined boulevard does not have adequate lighting at night.



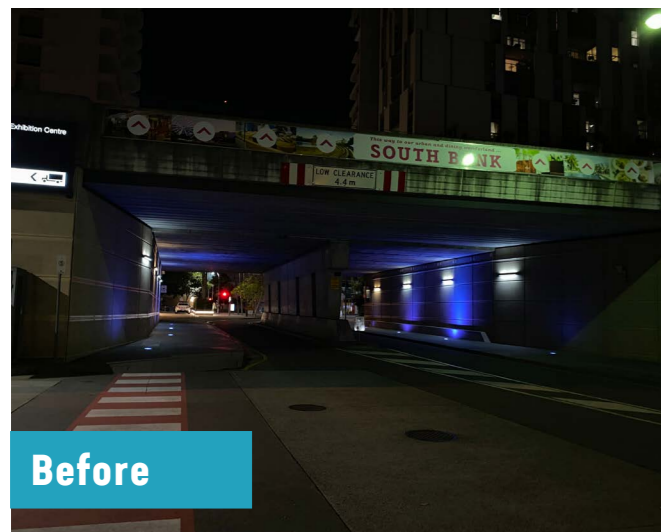
Tree lined boulevard featured with lights.



Street light is hidden by tree and creates dark laneways



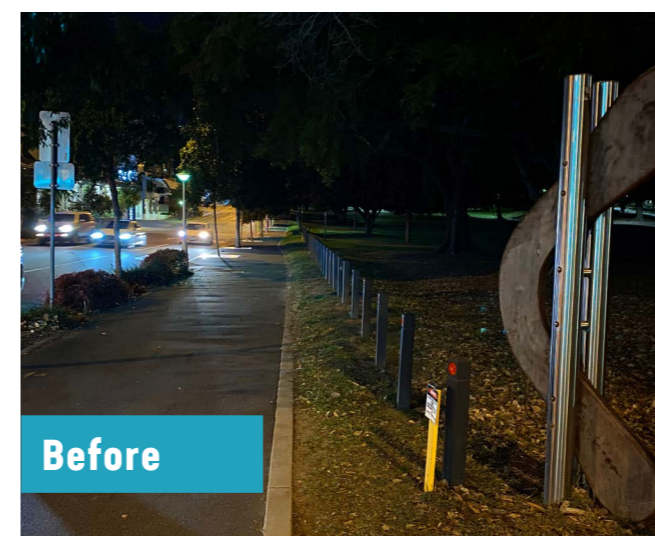
Opportunity to use trees to hang lights for appeal, comfort and security.



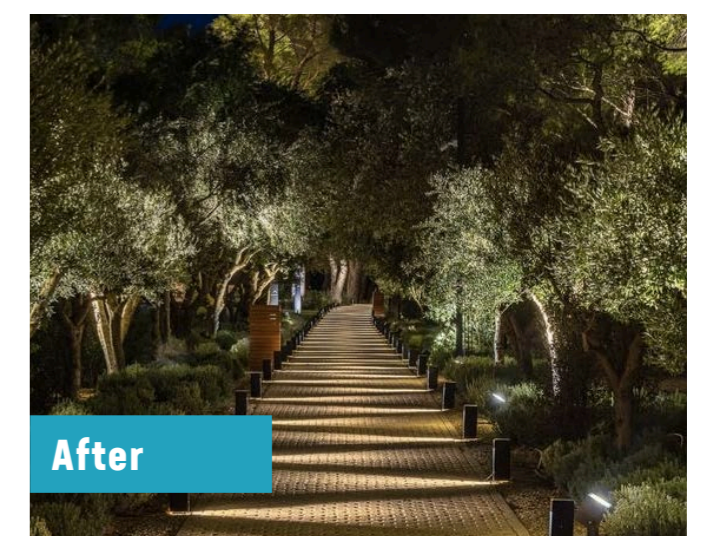
Limited lighting and unappealing thoroughfare.



Feature lighting and vertical surface planting.



No street/park lighting impacts usability at night.



Thoughtful lighting options improve livability and security.

# PRIORITY 2 SPACE TO GROW

Statistically inner-city Brisbane has approx. only 6 square meters of open space per resident - compared to Sydney's 13 square meters and Melbourne's 29 square meters.

This priority explores the opportunity to maximise the existing green and open spaces which are fundamental to our livability.

Areas marked in purple, denotes Vision South Bank 2017 declaration that areas of the Kurilpa Point need to be established as future community spaces.

- Potential micro performance spaces
- Kurilpa Point



# SPACE TO GROW

## Musgrave Park

Musgrave Park's significance to the city lays in its history, location and use. The land, and area around, what is now known as Musgrave Park was extensively used by the Aboriginal communities before European settlement.

It was gazetted as a municipal park in 1865, making it one of the oldest public parks in Brisbane. In response to submissions in 1988 the Brisbane City Council established the Jagera Community Arts Resource Centre in the former South Brisbane Bowls Club facilities and held the combined former bowling greens and tennis court land in trust for Aboriginal purposes.

The park houses barbeques, basketball half court, cricket facility, playground, public toilets, a large sporting field as well as a wide tree-lined boulevard. It is used by various groups as a meeting place as well as for cultural celebrations and sporting pursuits.

It is home to culturally significant events:

- NAIDOC Week (Musgrave Park Fun Day)
- Paniyiri Festival

Due to the construction of the New Performing Arts Venue and the Neville Bonner Bridge the Cultural forecourt is currently closed to events. A number of important festivals/events previously located in the Forecourt will potentially be moved to Musgrave Park (subject to Covid regulations).

The park terrain lends itself to events due to its openness however the park lacks the infrastructure to support such events. These include more sources of electricity (to avoid diesel generators being used); permanent water stations; extra toilets; waste management considerations, improved lighting and security (cameras) for night activities.

Additionally, park enhancements such as:

- Maximising the tree-lined boulevard, feature lighting, bench seating
- More and interesting performance spaces
- Improved wayfinding
- Clear connections to the river
- Improved facilities for events, including streamlined booking facilities
- Improved lighting
- Community garden

In order to meaningfully acknowledge and heighten the visibility of First Nations people's values, culture and history through the site (Musgrave Park and beyond to Kurilpa Point ) it is the report's recommendation that the various Aboriginal communities that use the park be involved in future planning.



# OPPORTUNITIES



Improved waste management facilities particularly during events.



Opportunity for aesthetically pleasing and clear way finding.



Opportunity to maximise tree lined boulevard with public amenities.



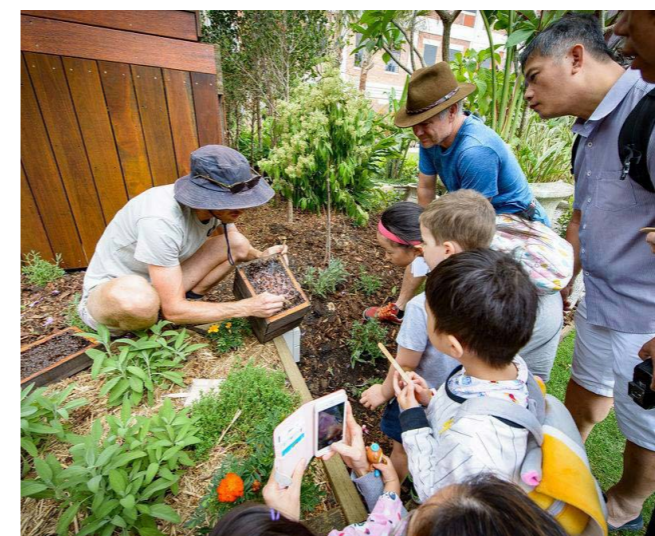
More amenities such as permanent water stations and bike racks.



Opportunity to maximise cultural events.



Opportunity for more welcoming and clear entrance to park.



Opportunity for community gardens.



Opportunity to connect Musgrave park to the river.

# SPACE TO GROW

## Micro Performances/Arts Spaces - Added Public Realm

As the cultural capital of Brisbane, the South Bank precinct provides the ideal landscape for artistic expression.

The introduction of scattered micro performance spaces (and/or art spaces) has the ability to enhance urban quality, add vitality and create interaction between people that bring communities together.

Opportunistic performances, pop up art/music installations, creative activations, cultural activities and outdoor entertainment provide a focus of interest. Locations for micro performance spaces include Musgrave Park and pocket parks throughout the precinct, as well as the Grey an Melbourne St intersection (which was previously earmarked at the entrance of the Brisbane Metro).

These designated spaces and/or facilities enhance the streetscape for pedestrians and double as practical public amenities.



Musical instruments placed in parks and public domains for community to enjoy and engage.



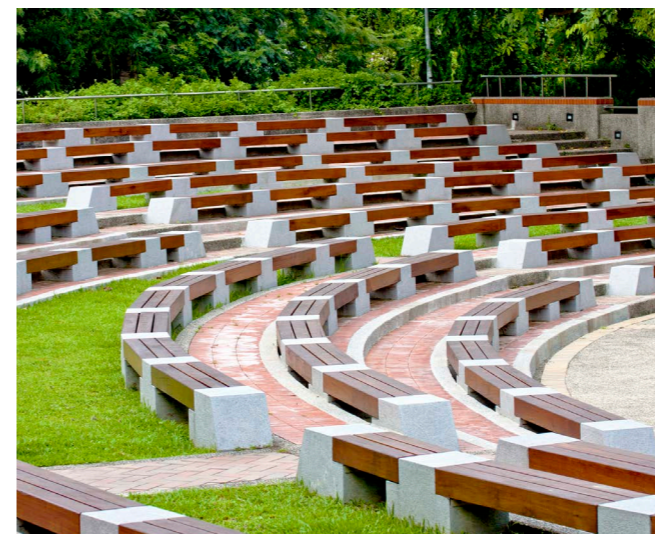
Tiered seating transformed into performance space.



Pop up installation - encouraging artists to use green and open spaces.



Art installations interspersed around the precinct makes walking and exploration interesting and pleasurable.



Simple seating can be used for multiple purposes - meeting place, education and performances.



Opportunity for simple amphitheatres ready for activation.

# ENGAGEMENT

Implementation and planning should be a collaborative effort between stakeholders including Brisbane City Council, State Government, traditional and private landowners and the users of the precinct and BSB.

BSB sees its role as key influencer to encourage its constituents to share the vision and take a stake in its delivery.

BSB's membership include small, medium and large businesses whose constituents include residents, Brisbane locals, visitors, students and workers.

BSB members include cultural entities such as QPAC, Queensland Theatre, Queensland Symphony Orchestra, Queensland Ballet, Camerata, Queensland Opera, Southern Cross Soloists, as well as educational institutions such as Somerville House, St Laurence's College, Brisbane State High School, West End Primary School, Griffith University, Tafe Qld Brisbane, JMC, and SAE Qantum.

BSB is also able to drive this agenda via its various subcommittees including Sustainability, marketing, precinct future, and events.

BSB recognises that this report represents its vision and priorities for the precinct and looks forward to working with the relevant bodies that can bring this vision to life.







VISION SOUTH BANK



**Business  
South Bank**  
Well connected

For more information contact:  
Phone | 3846 5191  
Email | [admin@businesssouthbank.com.au](mailto:admin@businesssouthbank.com.au)  
Website | [www.businesssouthbank.com.au](http://www.businesssouthbank.com.au)